



# MONITOR YOUR AIR VALVES ANYTIME, ANYWHERE

**ARISENSE** provides “remote” visibility into your air valves and pipes, reducing operational costs and preventing fines caused by clogging, flooding, high pressure, leakage, overflow, tamper and tilting.

**ARISENSE** is adapted both for wastewater and water transmission systems.

**ARISENSE** employs a combination of sensors integrated within the air valve itself that continuously monitors its function and performance and transmits data to you.

## WHY ARISENSE MAKES GREAT SENSE

- **Detect potential failures or faults** and identify air valves in need of immediate maintenance.
- **Cost-effective maintenance**, plan your inspections and servicing according to real needs.
- **Receive pressure data** that helps protect your pipeline system against leaks & blockage.

**ARISENSE** is smart - it can tell you when the air valve needs a service. It is also predictive - detecting issues before they occur. In addition to this, ARISENSE saves you money by lowering maintenance costs and avoiding penalties.

**ARISENSE** is a reliable and advanced air valve that builds on the AVK air valve expertise and technology you trust.

Gaining 24/7 “remote visibility” into the functioning of your air valves through instant alerts about clogging, flooding, high pressure and a host of other issues, keeps you always in the know about your network.

To find out more about how ARISENSE could help you and your network, contact AVK UK Smart Water, see contact details above.

### Contact AVK UK

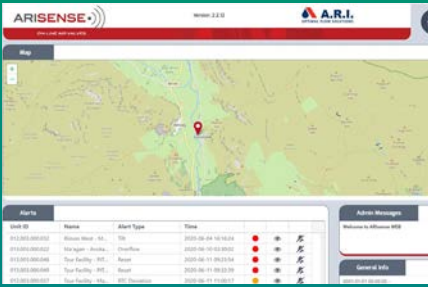
T: +44 (0) 01604 601188

E: [customerservice@avkuk.co.uk](mailto:customerservice@avkuk.co.uk)



[www.avkuk.co.uk](http://www.avkuk.co.uk)





## ALERTS AND DATA

- Instant alerts via text and email
- Run reports and view updates from your smart device



## ACCESS, ANYTIME/ANYWHERE

- Simple to navigate platform
- View data and alerts from your smart device



## SIMPLE TO INSTALL AND COMMISSION

- Connect via Bluetooth to set up
- Simple to use ARISENSE App on your mobile phone



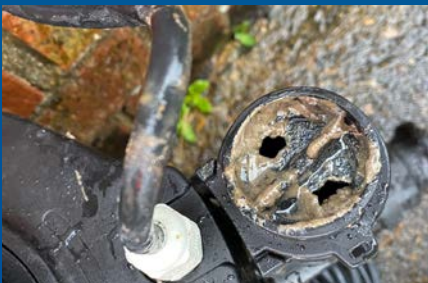
## FLOODED CHAMBER

- Alerts tell you if the chamber is flooded
- Make decisions as to whether flood is surrounding environment or leak



## OVERFLOW AND BLOCKAGES

- Alerts tell you if the float is clogged up and not moving, meaning imminent leak
- Alerts for when the water level is rising in the valves, meaning imminent leak



## CATCH LEAKS EARLY

- Alerts when the valve is leaking
- Adjust a dampener on the valve to ensure genuine alerts and rule out "spitting"

